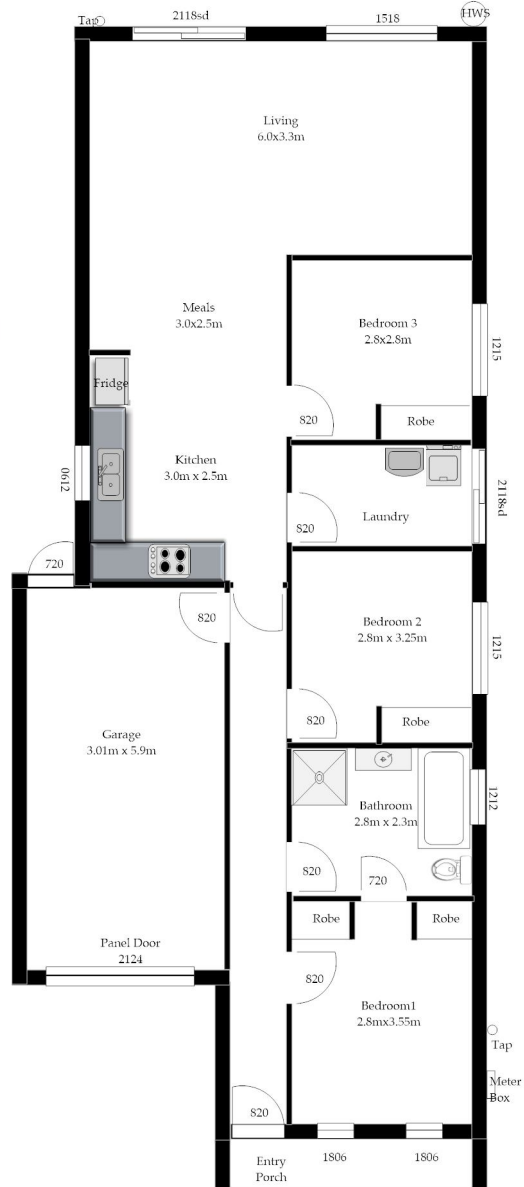


The Santorini Mini



Frontage may vary from picture shown



The Santorini Mini
 Width: 7.5m
 Depth: 18.4m
 Living: 94sqm
 Garage: 18sqm
 Porch: 4sqm
TOTAL: 116.5sqm



For further details

Phone: 0417 062 828

Email: xconstruction@bigpond.com